

St. Andrew's, Hopkinton

a visual story of our worship
space through the years



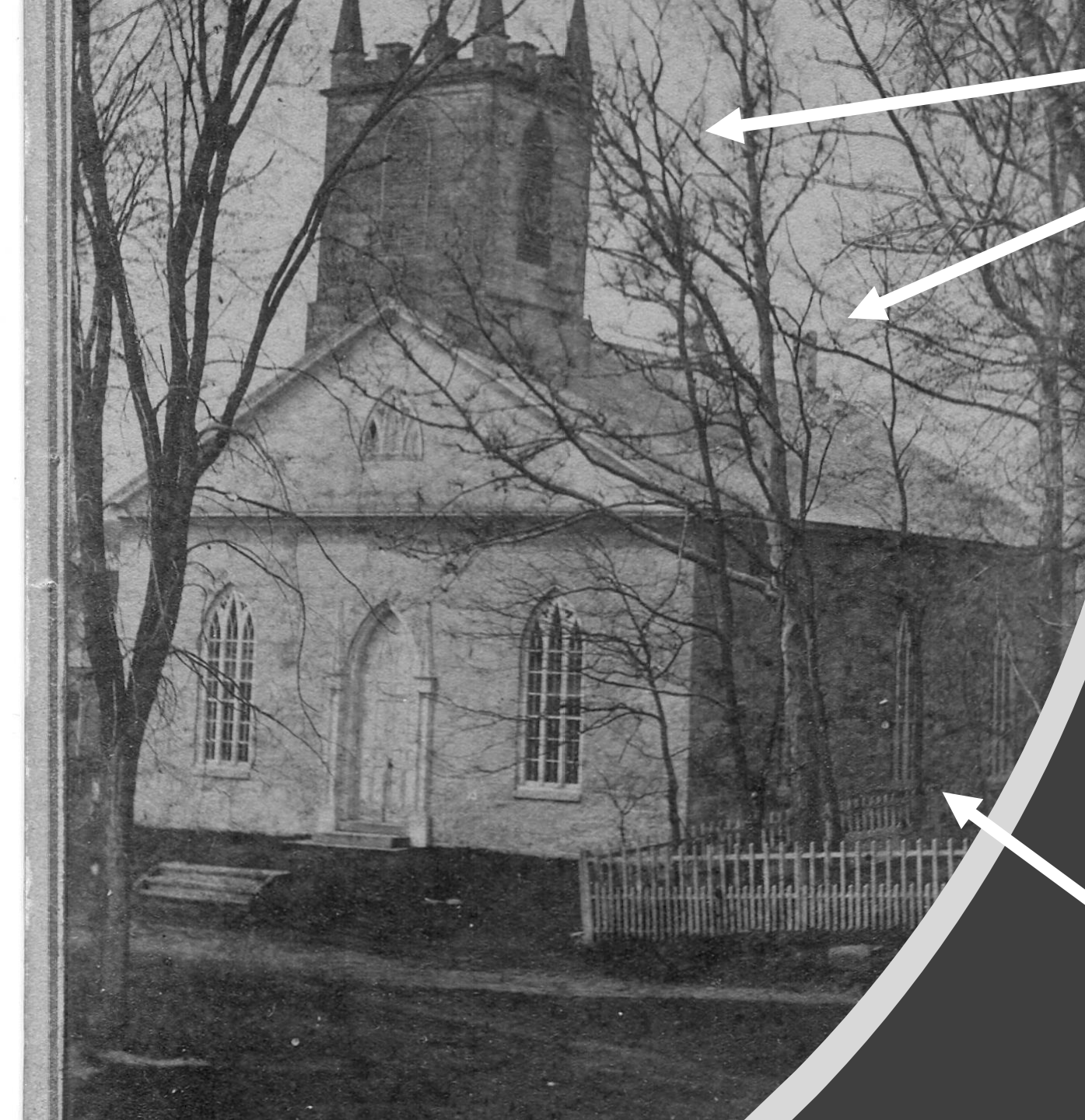
Early worship, 1803-1826

...We're coming to your house!

The first Episcopal worship in Hopkinton was by small gatherings of folks in their own and neighbor's homes

...Over at the Court House

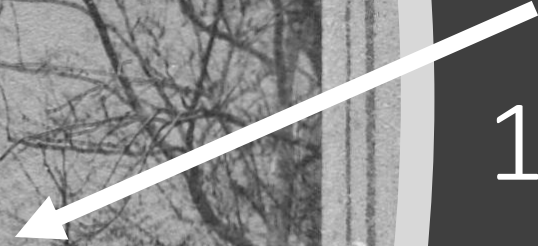
Episcopalians then worshipped for a time at the old courthouse, organized as "Christ's Church"



Original belfry



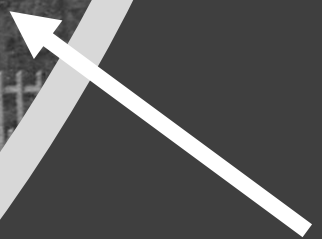
Front chimney serving a pair of stoves up front



1827: incorporated as "St. Andrew's"

New worship building dedicated June 25, 1828

All windows clear-glazed,
No signage, white front doors



From "Life and Times in Hopkinton", Pre-1889

- Doors red
- New chimney locations for stoves (both sides) in back of nave



Interior prior to 1874 known only partially

-“A note from the early 1830’s, in acknowledging the gift of a carpet for the chancel, mentions only a desk, a communion table and a pulpit.” – John Archer, June 1989

-Font dates to 1866, crafted in Claremont

-Pews much as presently, though without cushions

Nave interior as reconstructed c.1865-68

(pictured here post-1875)

- Gothic reredos
- “Altar & Word space” perhaps 1-2 steps up, and without distinguishing rail
- Font likely located to right of altar
- In 1875 “frescoed and painted”
- Oil lamps on stands and on counter-weighted pulleys in the attic.





Our organs along the way

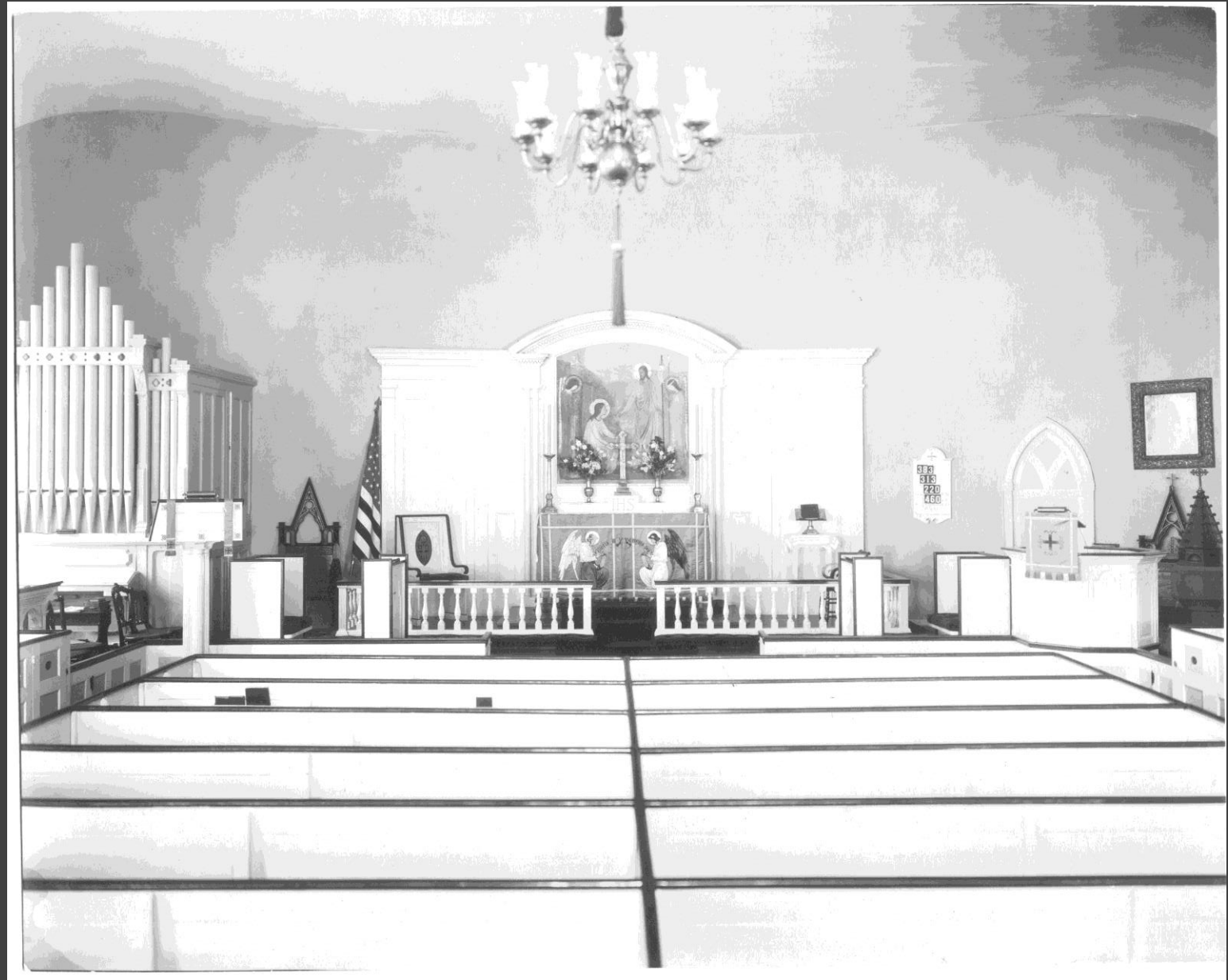
-First organ c.1846 to 1873 purchased from Rt. Rev. Carlton Chase (his parlor organ)

-Later Hook & Hastings organ installed 1874, seen here

-Note old left-side rear door visible behind organ case

1919, another
interior
reconstruction

-newly conceived
“chancel & sanctuary”
layers



c.1919 update
cont.

-New Altar and
centers of the
Word

-Font is up front
(perhaps always
had been)

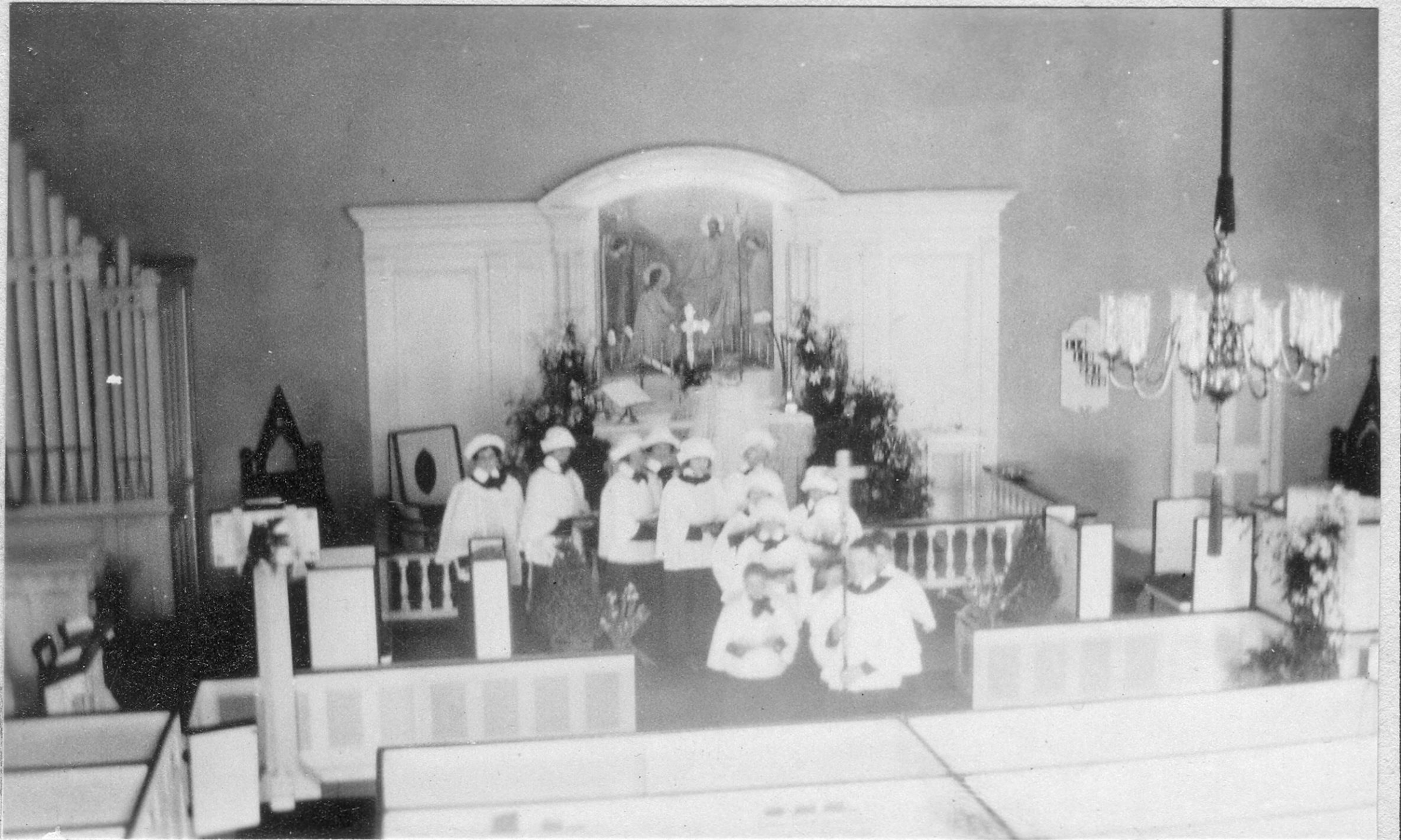
-No sanctuary
lamp as yet



c.1919 update
cont.

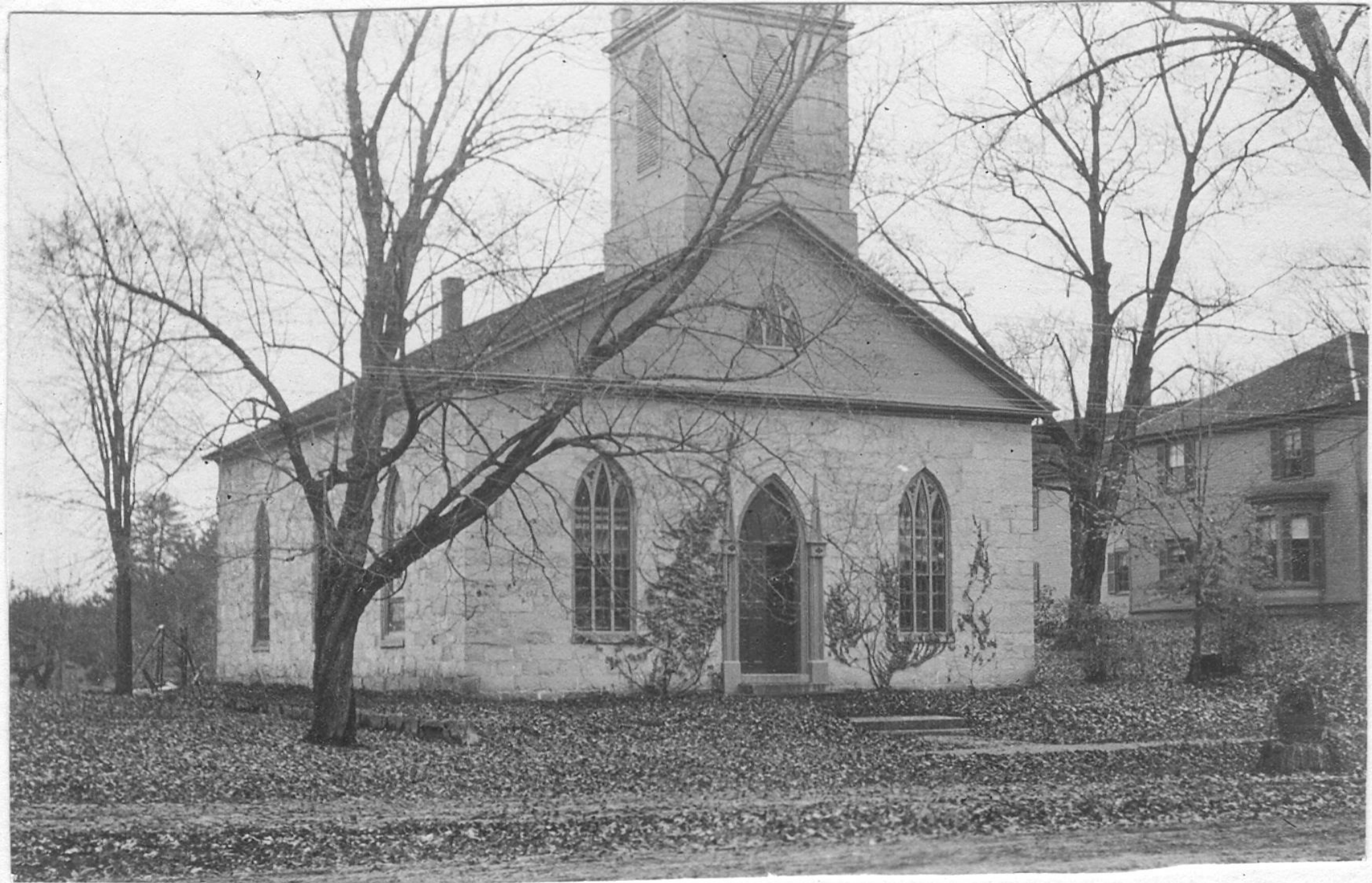
- New ceiling & lighting
- Organ case changed, 'extra' crosses removed from top
- Many* formal seats up front
- No railings from pew-floor to chancel













EPISCOPAL CHURCH
HOPKINTON N.H.

In the days of ivy!

“Harvest Home” festival?





HOPKINTON,
N. H.



1889-1896:
Side windows
updated with
stained glass
(this picture is post-1893)

Chimney moved
again, now
attached to outside
rear of church. Coal
chute discernable
below middle
western window.

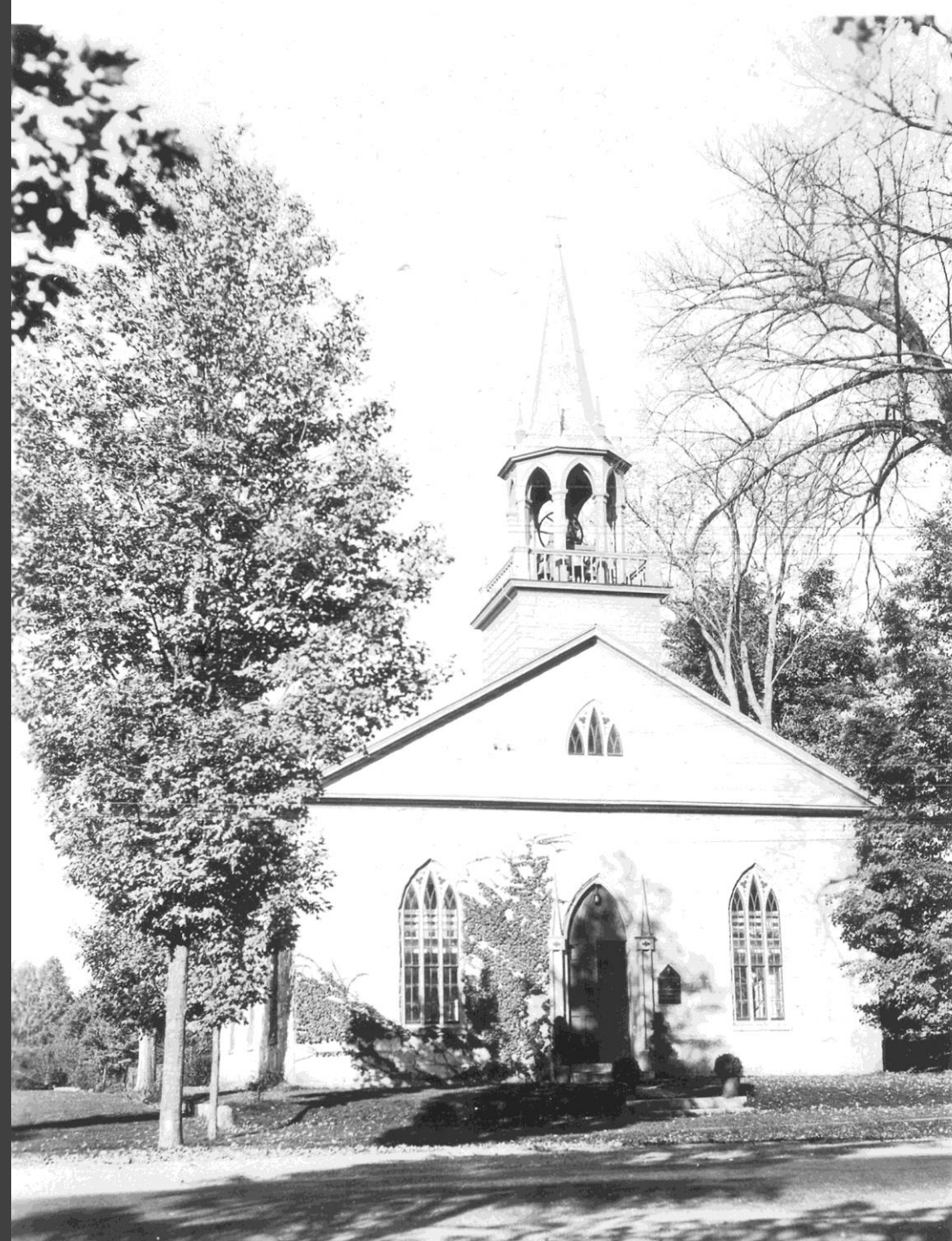




pre-1930: -Large front porch on what is now the Parish House (was private residence)

1920-30: Gothic reaches our
roofline

After leaking in prior belfry,
Belltower designed by Ralph
Adams Cram, completed 1930





Red doors used to
open inwards

Simple Latin cross

c. 1932-1936:
Sanctuary Lamp
added, along with
Stations of the Cross

-Plaque seen on wall
to left of reredos
(later sold)

-Earlier iteration of
altar rail kneelers
(current kneelers date
to 1977)



Later proliferation of formalized worship spaces
[garden 1990, library chapel 2000s, Great Hall
2000s, classroom chapel 2015]



Continuing organ case augmentation

Pipes repainted

Case re-stained and
expanded

Crosses re-appear
decades later!

(reproductions crafted
under organist Jay
Zoller)

Pentecost 2016



Pentecost 2016

- Altar pulled away from wall (c. 1995-1998)
- Pulpit has been “tucked to the left” into the chancel floor, providing accessibility around it
- Floor level to right of pulpit dropped 3” to match rest of nave
- Profusion of ceremonial seating has been simplified
- Railings added to chancel steps
- Episcopal Flag has joined American Flag
- New kneeler cushions



-Font moved to rear of church space (date uncertain, possibly related to new pattern of travel after “sheep run” constructed)

-Heating updated to a 5th iteration, at least, c.2010 with a pair of natural gas furnaces





Stations of the Cross

Seen here along the wall, added c. 1936

-Choir-area pews have been cut back to expand seating for musicians





“Great Hall”
created in 2003
renovations
Serves for
“Wintergreen”
worship in
Epiphanytide in
order to save on
heating prior to
gas furnaces in
nave. Used
similarly
thereafter for
liturgical
diversity



And continuing updates outside



We seem to be planting now our third-fourth generation of trees to adorn the building

218 years of worship
195 years in our present building
Doors wide open for what's to come

